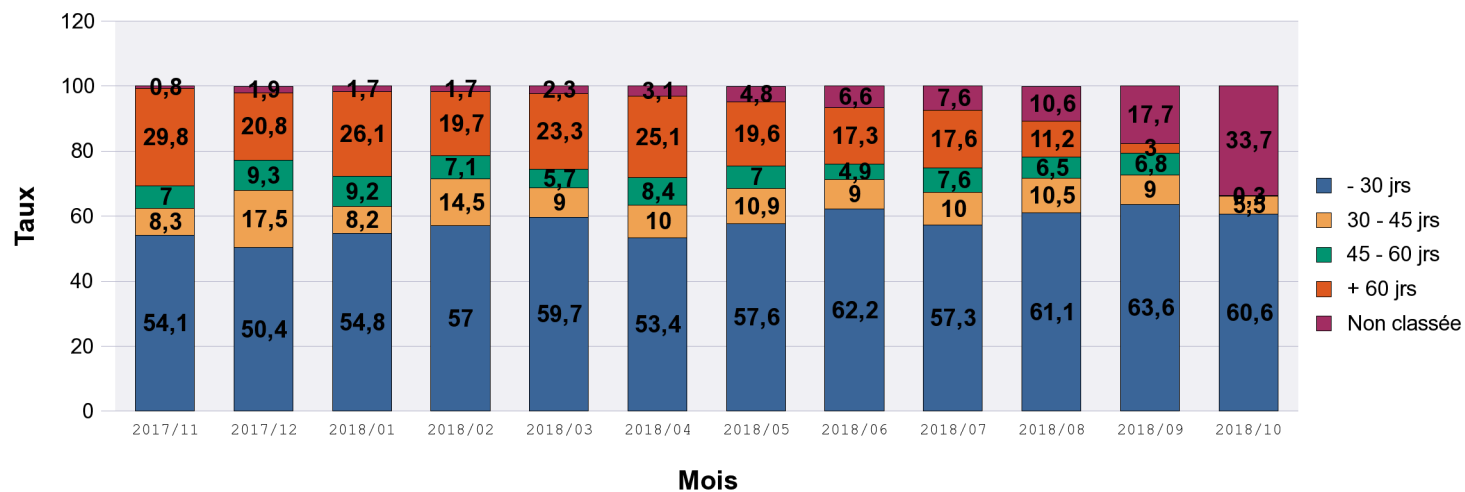
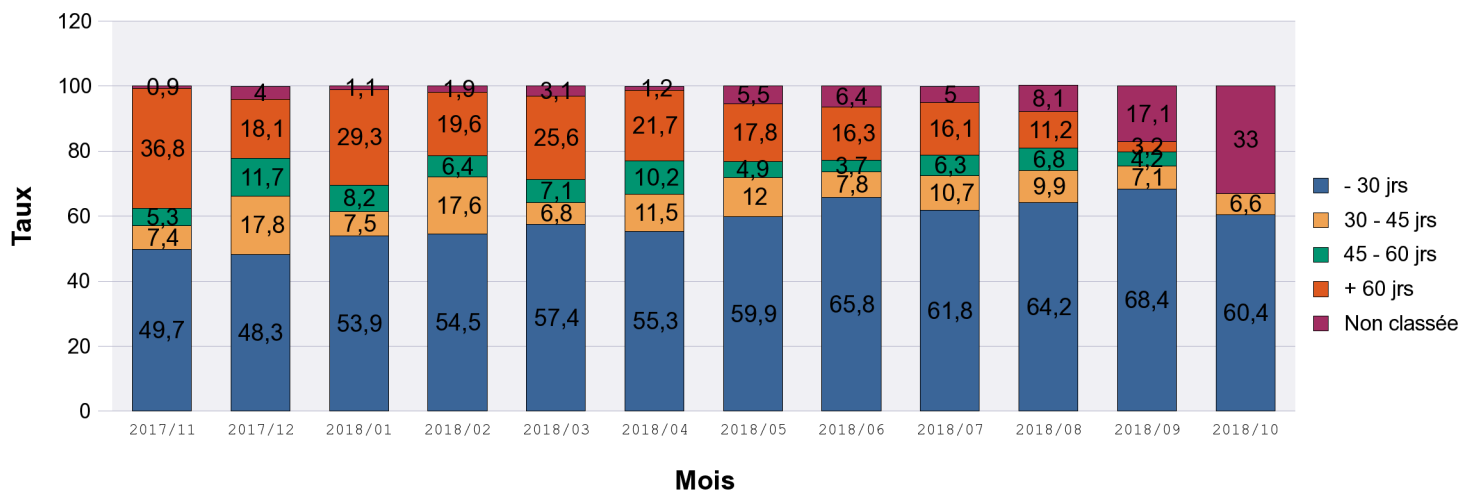


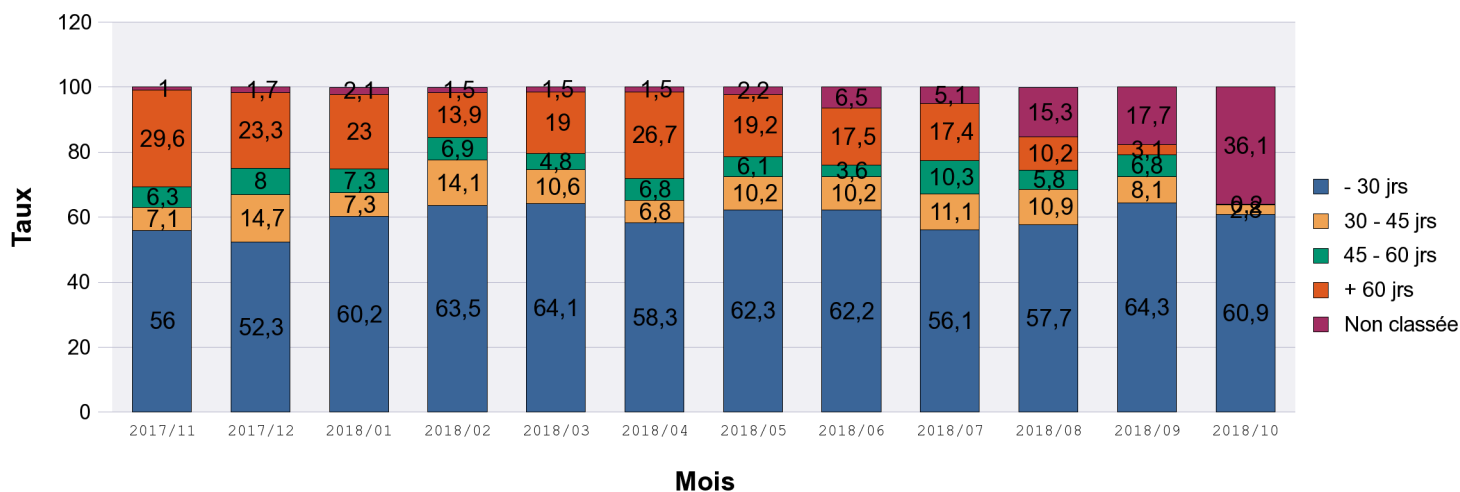
Evolution du délai de classement des réclamations sur 12 mois glissants Document actualisé le :19/11/18



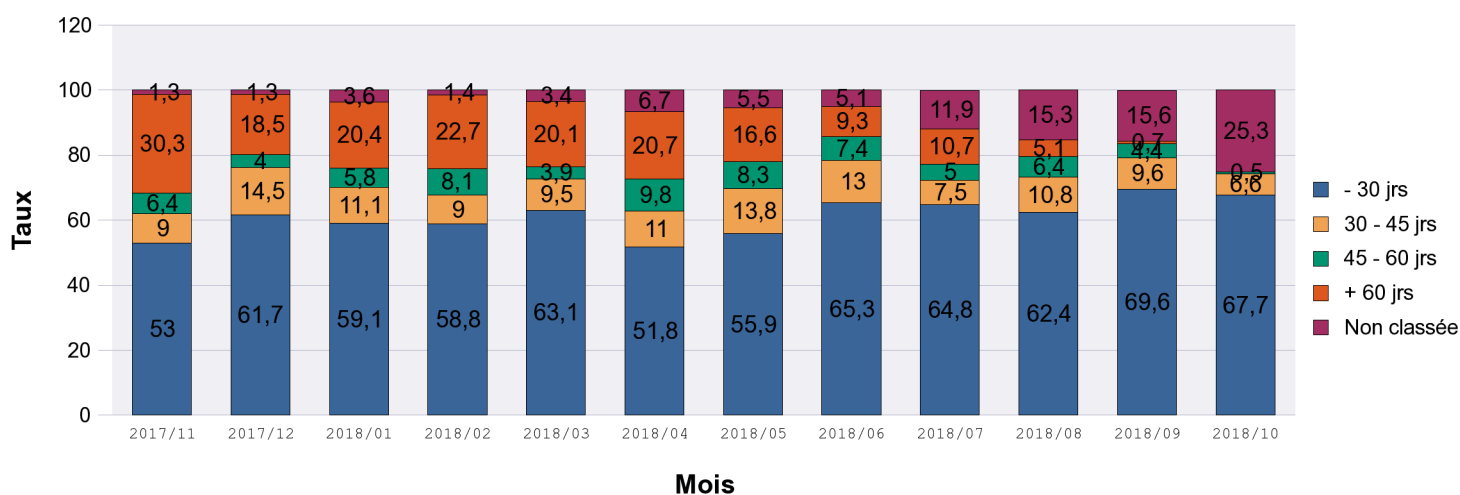
A1 Orange



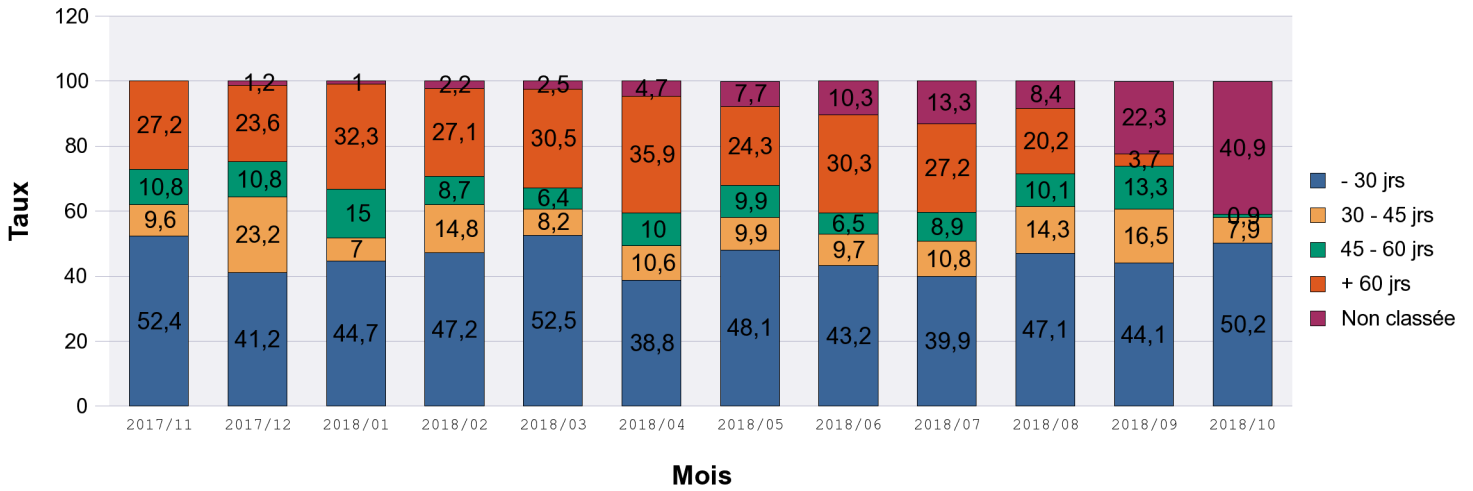
A2 Avignon



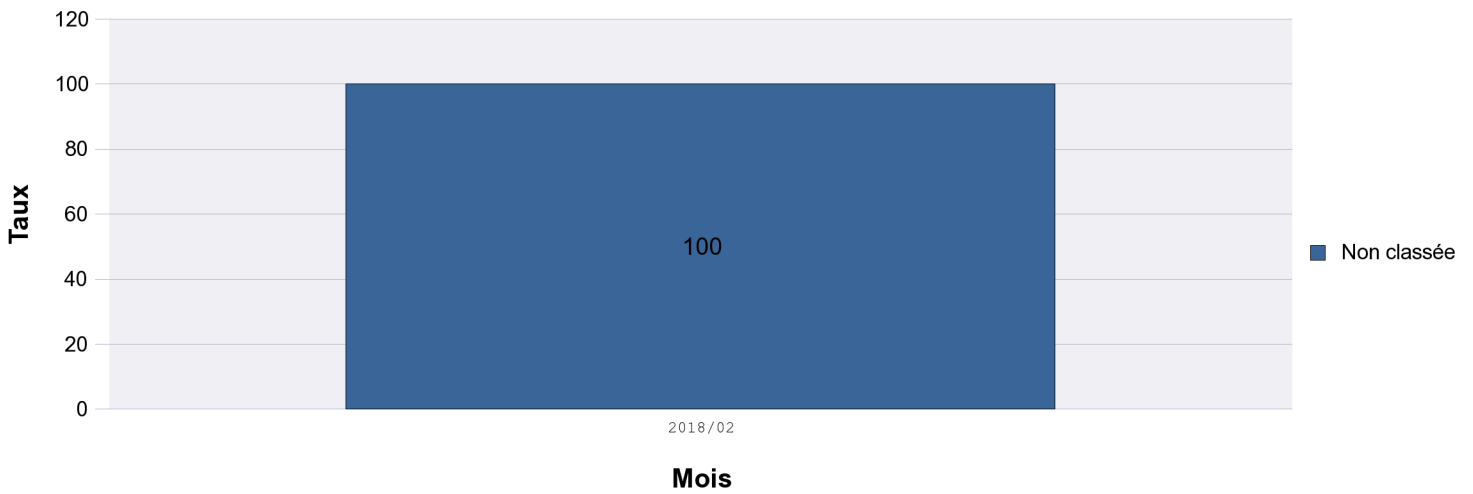
A4 Carpentras



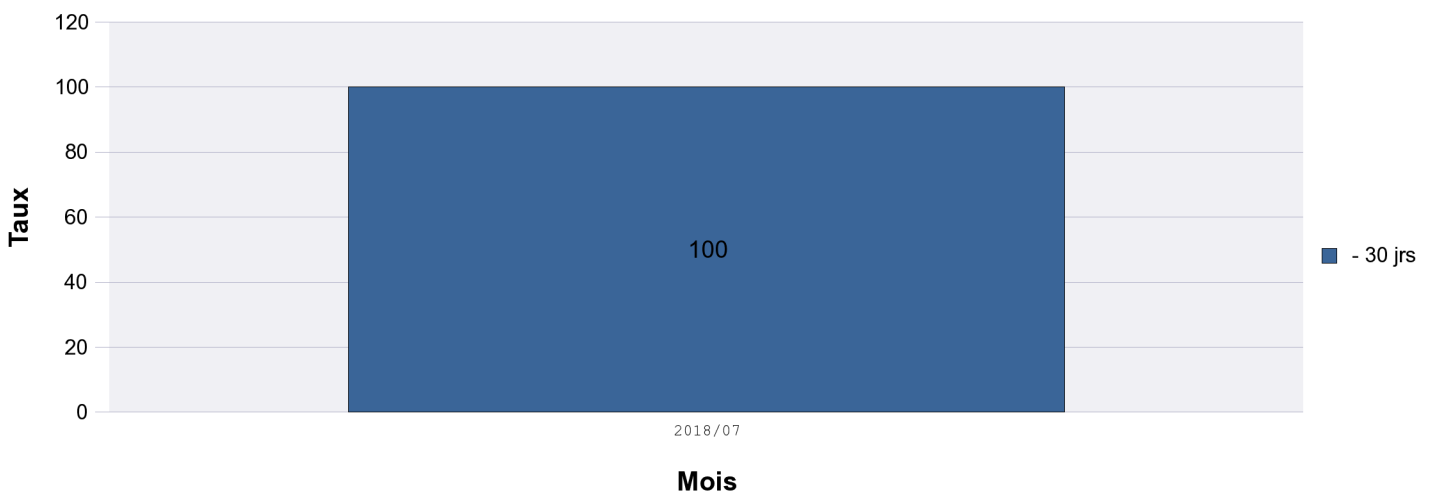
A5 Cavillon



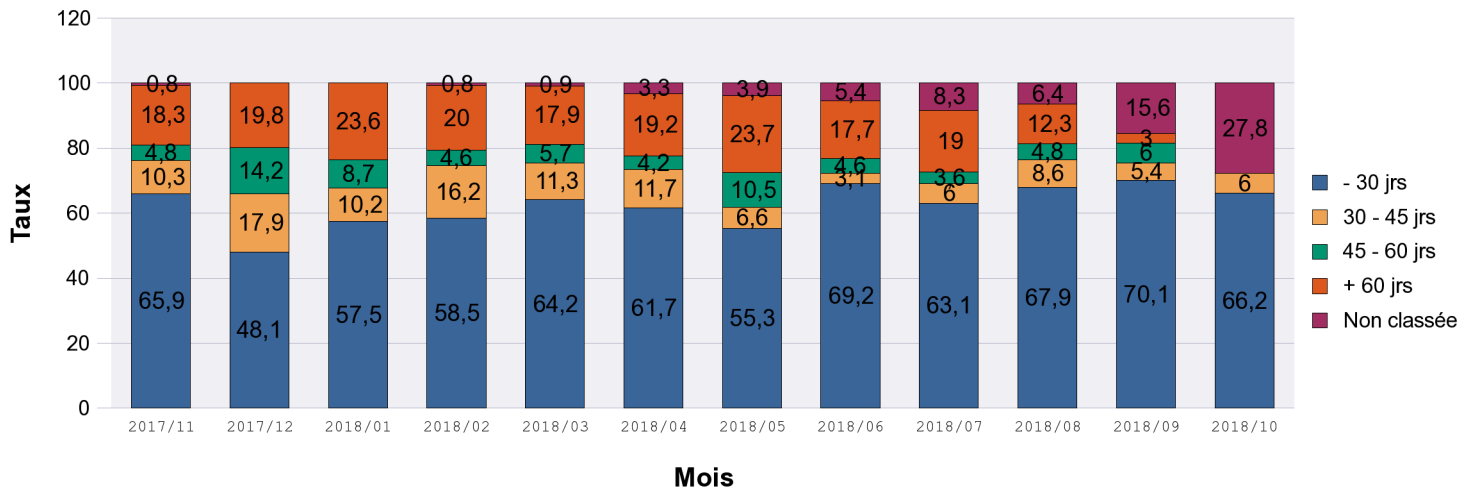
A6 Apt



Administrat generale

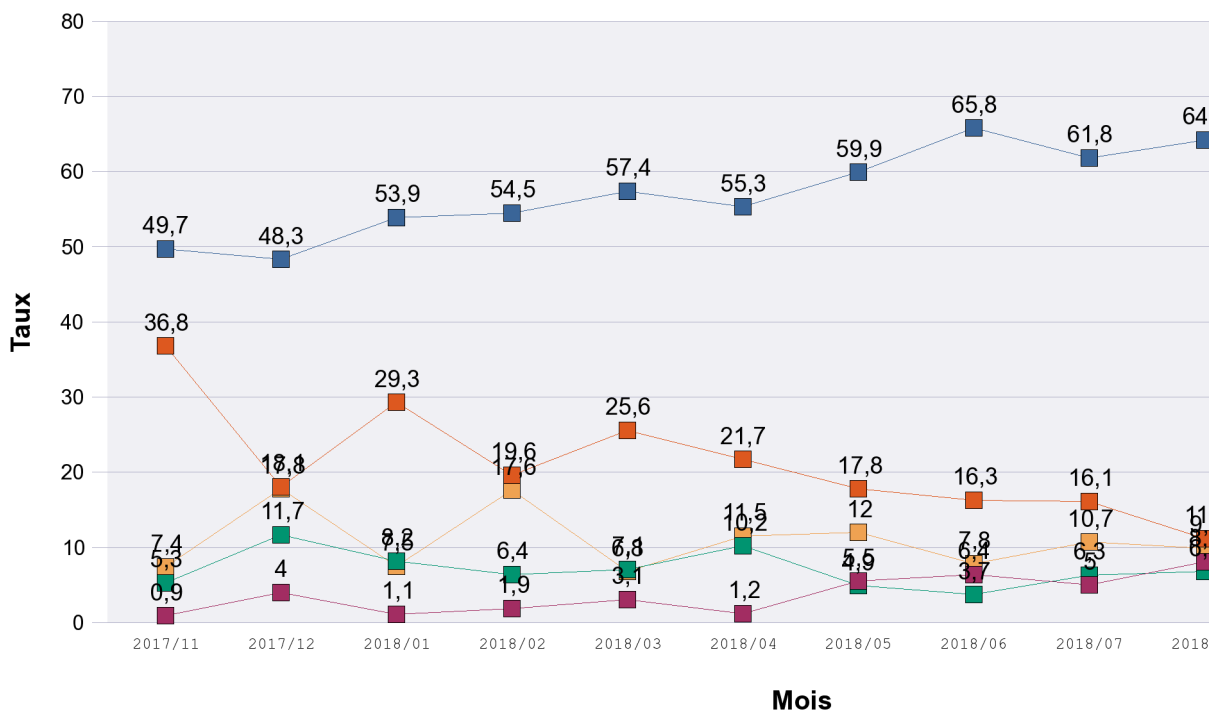


AS Accueil/Standard

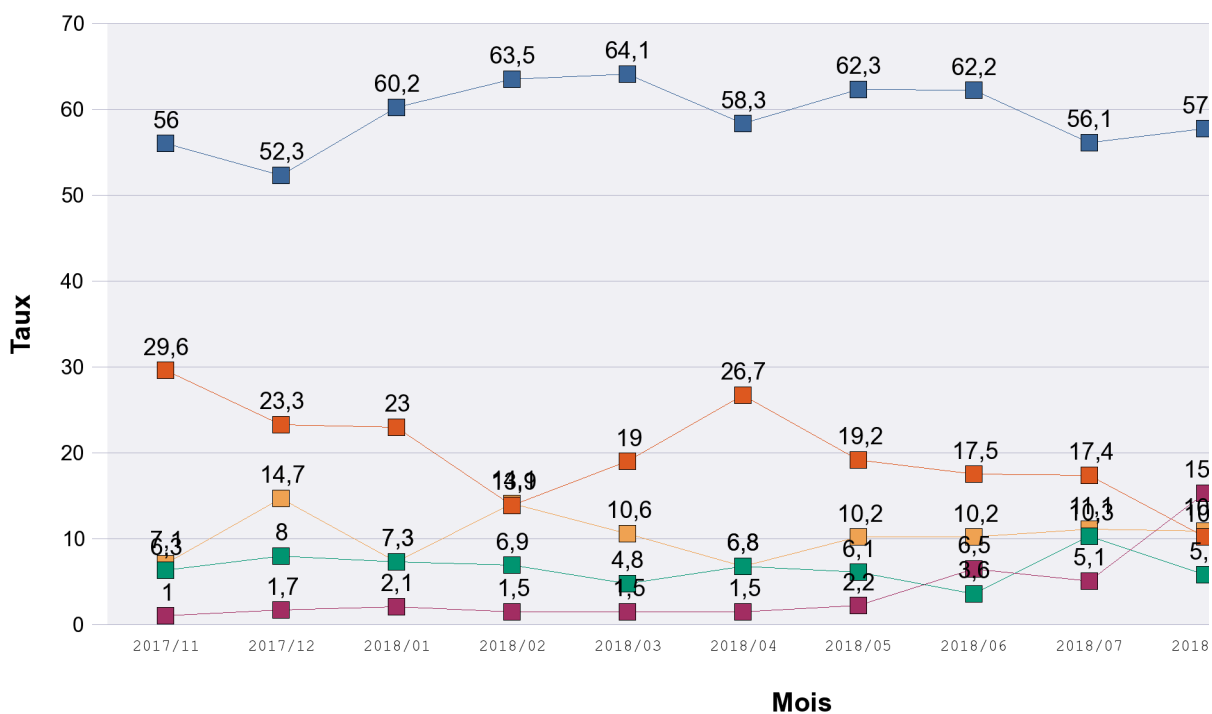


Evolution du délai de classement des réclamations sur 12 mois glissant

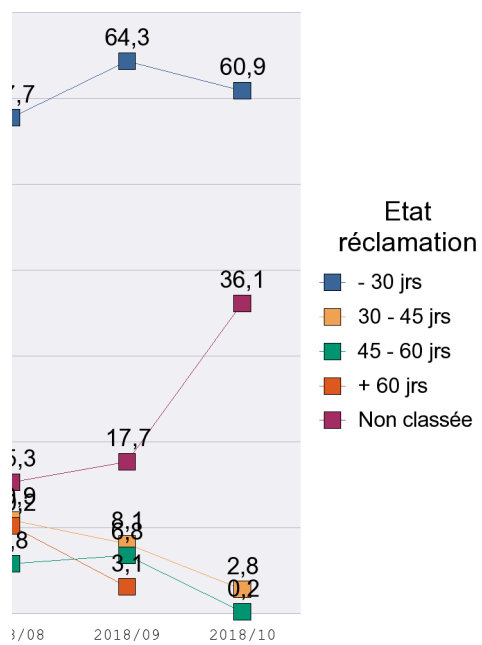
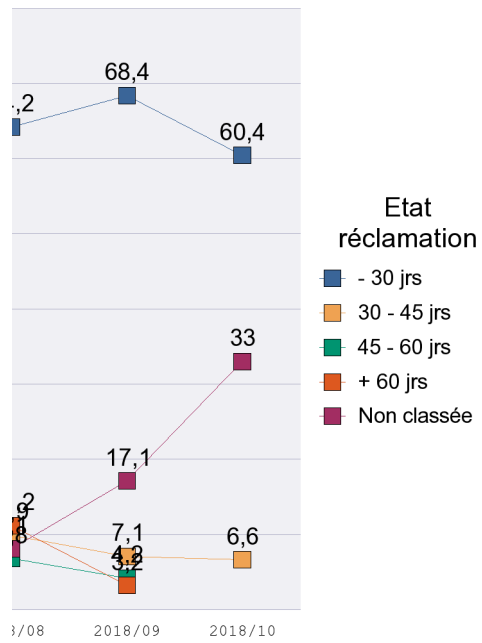
A1_Orange



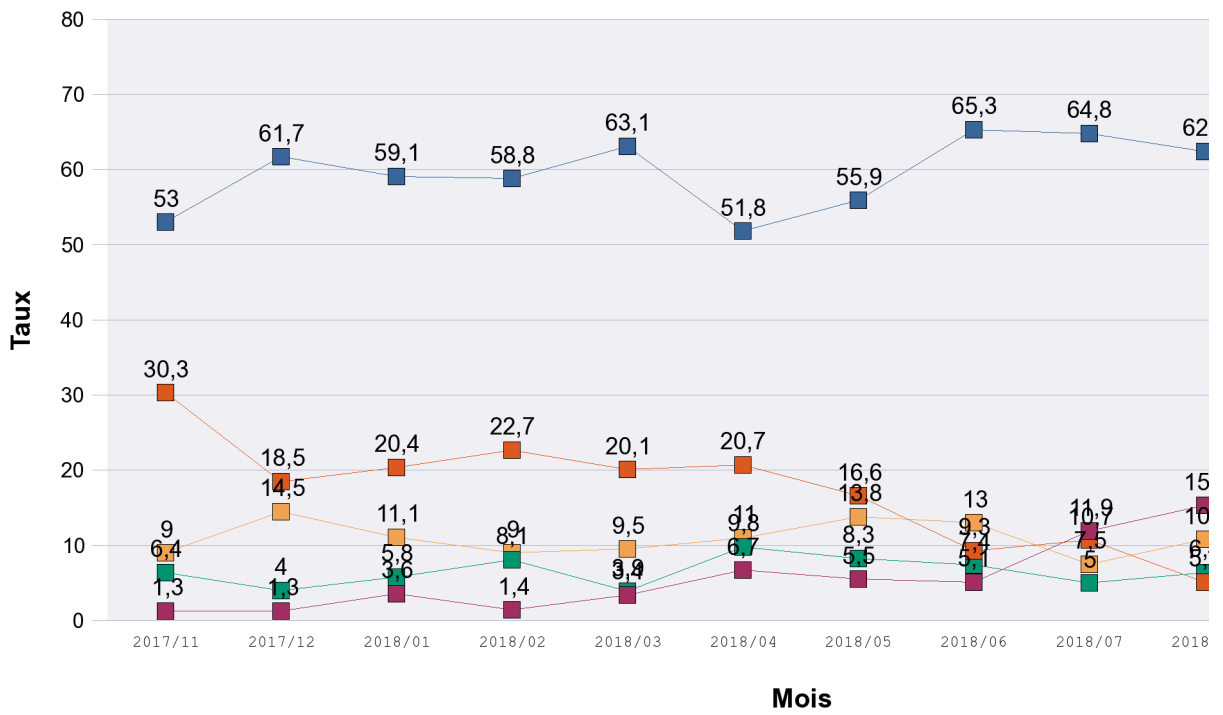
A2_Avignon



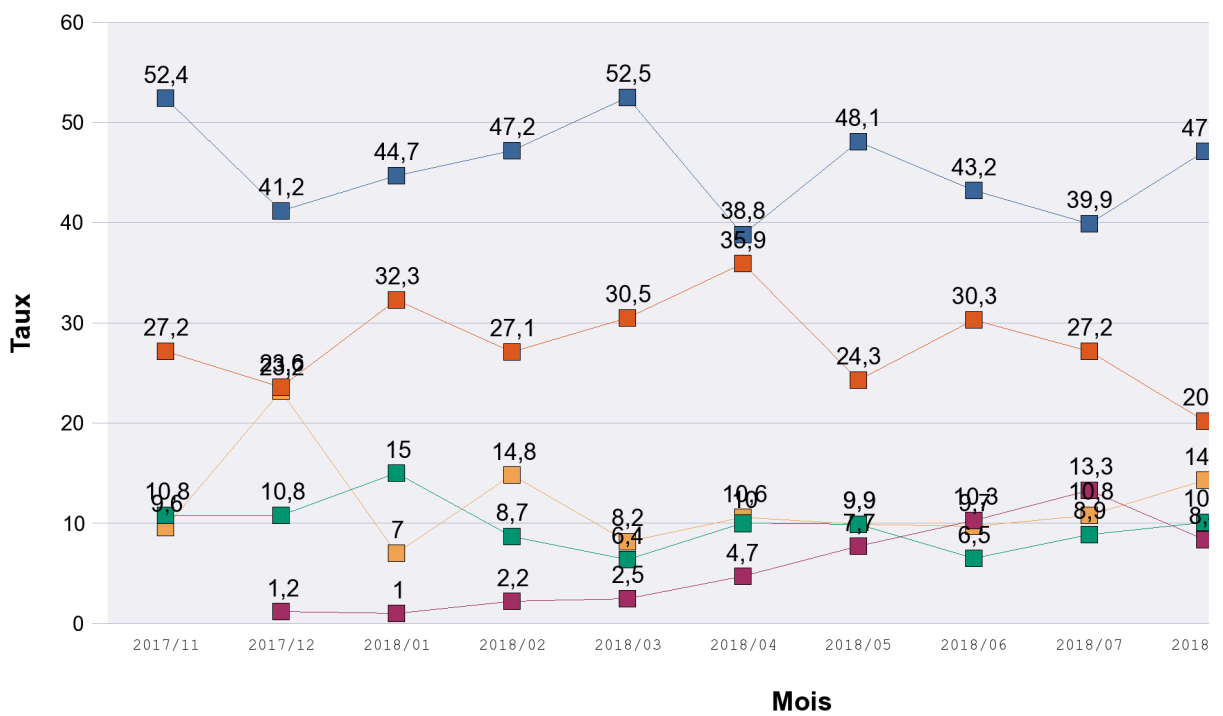
ants



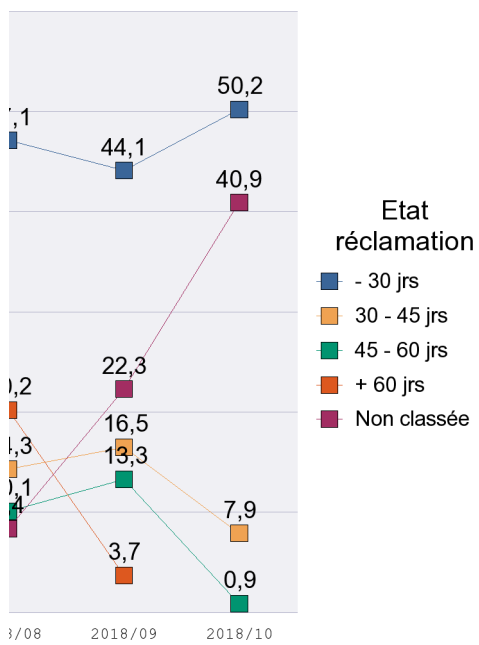
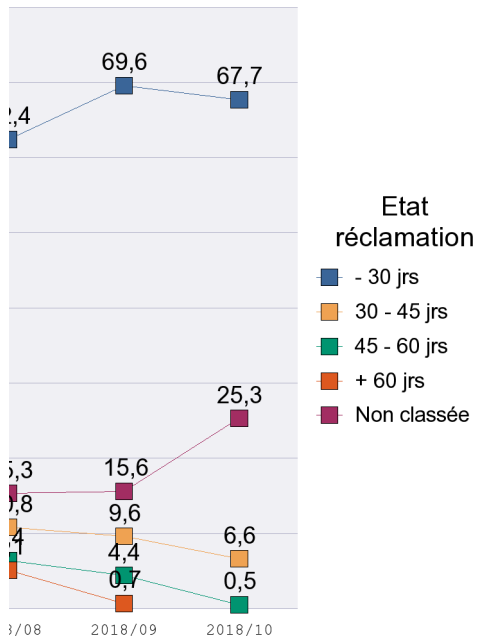
A4_Carpentras

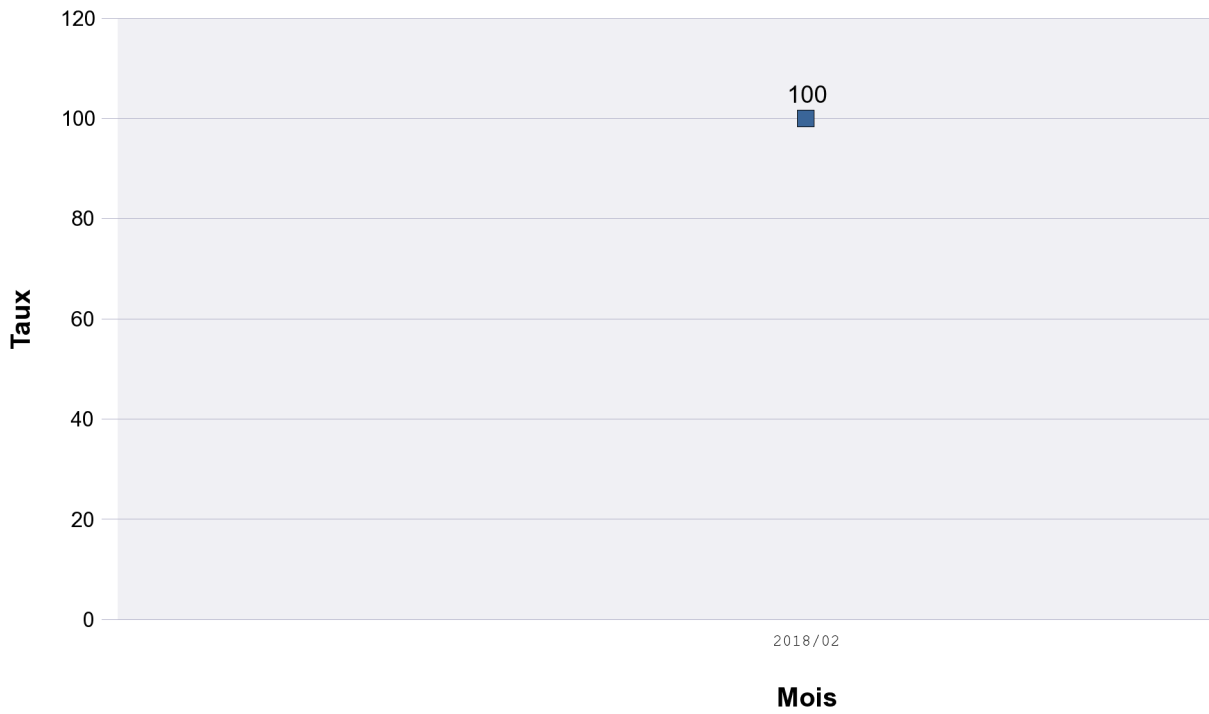


A5_Cavaillon



A6 Apt

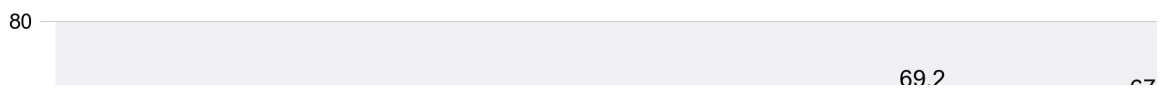


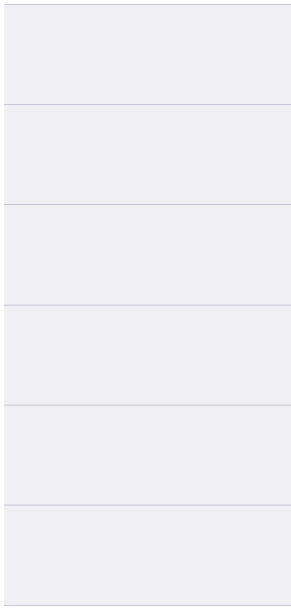


Administrat generale



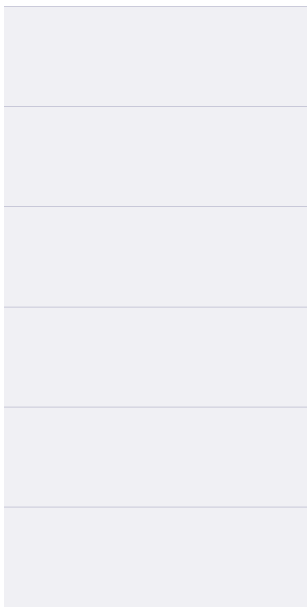
AS Accueil/Standard





Etat
réclamation

- Non classée



Etat
réclamation

- - 30 jrs

